

Electro-Voice®

a MARK IV company

Model SMK-1 Stand Mount Accessory Kit

SPECIFICATIONS

Inside Diameter:

Accommodates 1 $\frac{3}{8}$ -inch diameter shaft

Mounting Requirements:

Five holes drilled in speaker system enclosure,

- 1 — 2-inch diameter
- 4 — $\frac{5}{16}$ -inch diameter

Material:

Steel

Finish:

Black paint

Net Weight:

0.45 kg (1 lb)

Shipping Weight:

0.6 kg (1 lb, 5 oz.)

DESCRIPTION

The SMK-1 stand mount accessory kit allows placement of the SH-1502ER and SH-1512ER speaker systems on the Electro-Voice 100BK tripod stand, or any other stand with a 1 $\frac{3}{8}$ -inch diameter.

By drilling five holes in the bottom panel of a speaker system and bolting a socket insert in place, the user can provide himself with a simple stand mount. Elevating a system from the floor to a stand will produce benefits in audience coverage, acoustic balance, and efficient space utilization.

MOUNTING

Using the dimensions given in Figure 1, locate and mark the center of gravity (the mounting center for the socket insert) on the bottom panel of your speaker system. A grease pencil or center punch can be used for marking. If you are installing this kit on a system other than the SH-1502ER or SH-1512ER, you can locate the center of gravity by balancing the system on a small surface (less than 1 inch square or round). Also, make sure there is sufficient clearance inside the system for the socket insert and its mounting hardware.

With the template supplied, locate and mark the 4 mounting flange holes using the center of gravity mark as the pattern center. Use a 2-inch diameter hole saw for the center hole and a $\frac{5}{16}$ -inch diameter drill for the flange bolt holes.

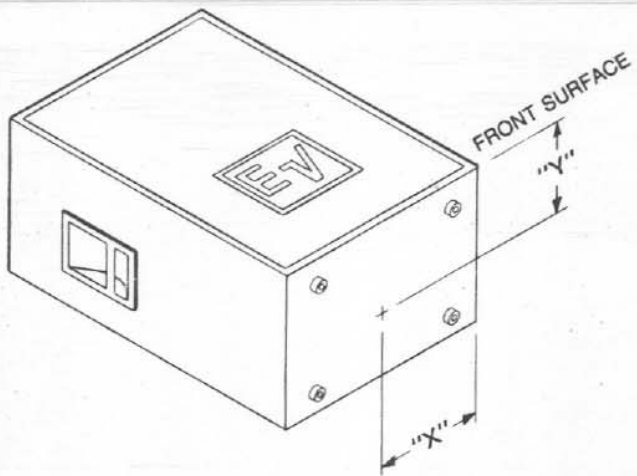
The single $\frac{1}{4}$ -20x1 $\frac{1}{2}$ inch hex washer head bolt is provided for mounting the propeller nuts inside the cabinet. Insert the bolt into one of the mounting flange holes. Thread a propeller nut on the end of the bolt by reaching through the 2-inch diameter hole. Using an appropriate $\frac{3}{8}$ -inch driver or wrench, draw the propeller nut into the cabinet wall until its flange is fully seated against the interior surface. (Figure 2) Remove the $\frac{1}{4}$ -20 bolt and repeat the process for the remaining for the remaining three holes.

With the propeller nuts in place use the four $\frac{1}{4}$ -20 flat head screws to mount the socket insert (see Figure 3).

For repair information and service locations, please write: Service Department, Electro-Voice, Inc., 600 Cecil Street, Buchanan, Michigan 49107 (Phone: 616/695-6831) or Electro-Voice West, 8234 Doe Avenue, Visalia, California 93291 (Phone: 209/651-7777).

Electro-Voice also maintains complete facilities for non-warranty service of EV products.

Specifications subject to change without notice.



SH-1502ER	12 ³ / ₈	8 ³ / ₄
SH-1512ER	12 ³ / ₈	8 ¹ / ₂
SPEAKER SYSTEM	"X"	"Y"

FIGURE 1 — Dimensions

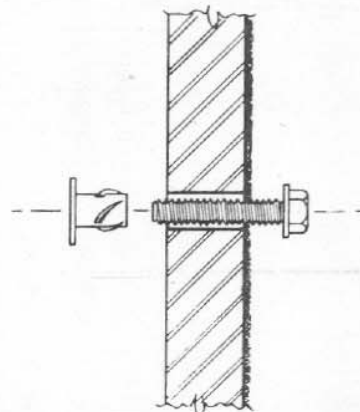


FIGURE 2 — Cross Section

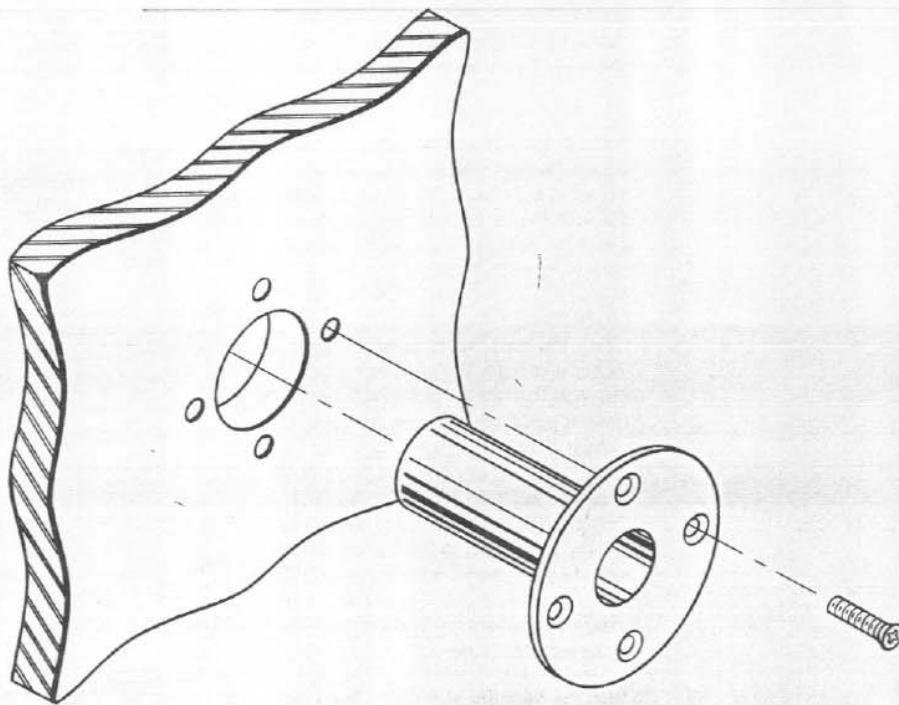


FIGURE 3 — Exploded View



ELECTRO-VOICE, INC., 600 Cecil Street, Buchanan, Michigan 49107

MANUFACTURING PLANTS AT ■ BUCHANAN, MI ■ NEWPORT, TN ■ SEVIERVILLE, TN ■ OKLAHOMA CITY, OK ■ GANANDQUE, ONT
 ©Electro-Voice, Inc. 1990 ■ Litho In U.S.A. Part Number 530854-734

a MARK IV company